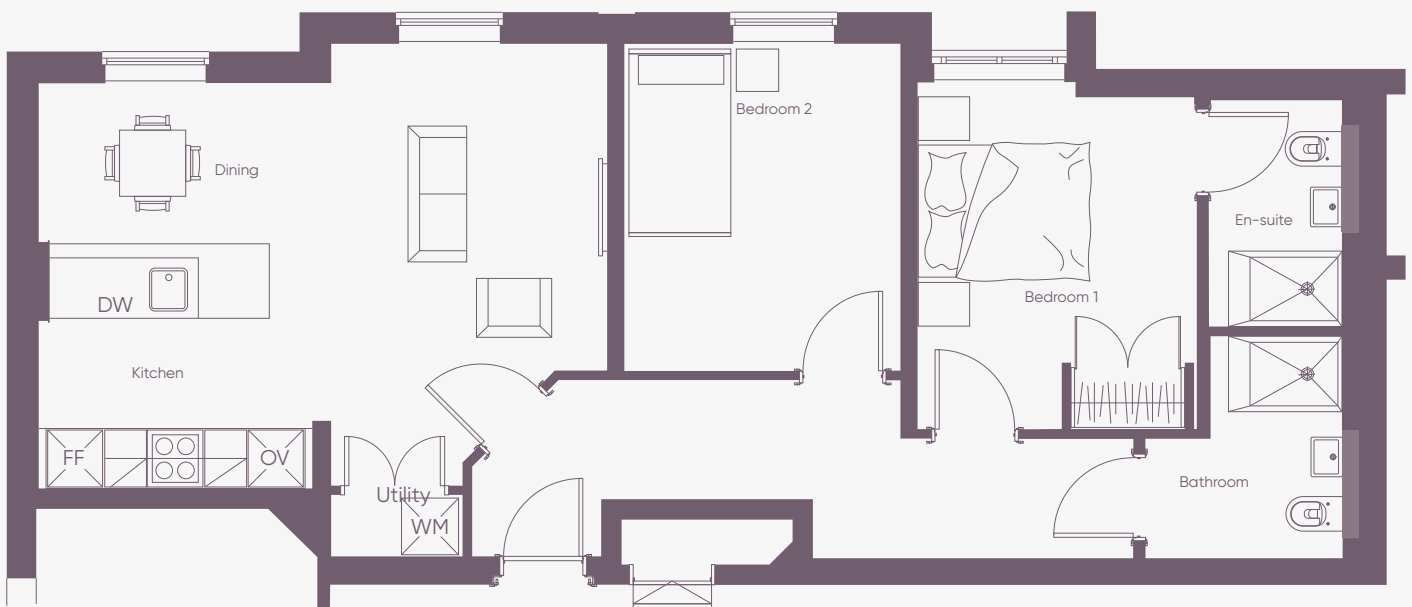


Apartment 101, The Vale

A beautiful two-bedroom apartment on the garden floor

The Brunel
737 sq ft/58m²



The Brunel offers spacious, practical living with an open-plan living area. A contemporary, fully-fitted kitchen comes complete with high-specification and energy-efficient appliances. Two bedrooms - one with en-suite - means you can comfortably host friends and family with ease. Elsewhere, you'll find built-in wardrobes, additional storage space and a dedicated utility room.

Internal measurements

Kitchen & Lounge	19' 7" x 15' 3"	6,015 x 4,675mm
Bedroom	12' 1" x 9' 6"	3,695 x 2,915mm
Bedroom	11' 7" x 9' 6"	3,560 x 2,915mm
En-suite	7' 9" x 5' 3"	2,410 x 1,610mm
Bathroom	7' 7" x 7' 5"	2360 x 2,300mm
Hall	17' 1" x 6' 1"	5,220 x 1,850mm
Utility	4' 6" x 2' 2"	1,390 x 680mm

All layouts/dimensions are for illustrative purposes only. Maximum distances shown. Apartments rented unfurnished. Moveable furniture not included. Rooms shown may not be representative of this apartment.



Apartments rented unfurnished. Moveable furniture not included. Rooms shown may not be representative of this apartment.