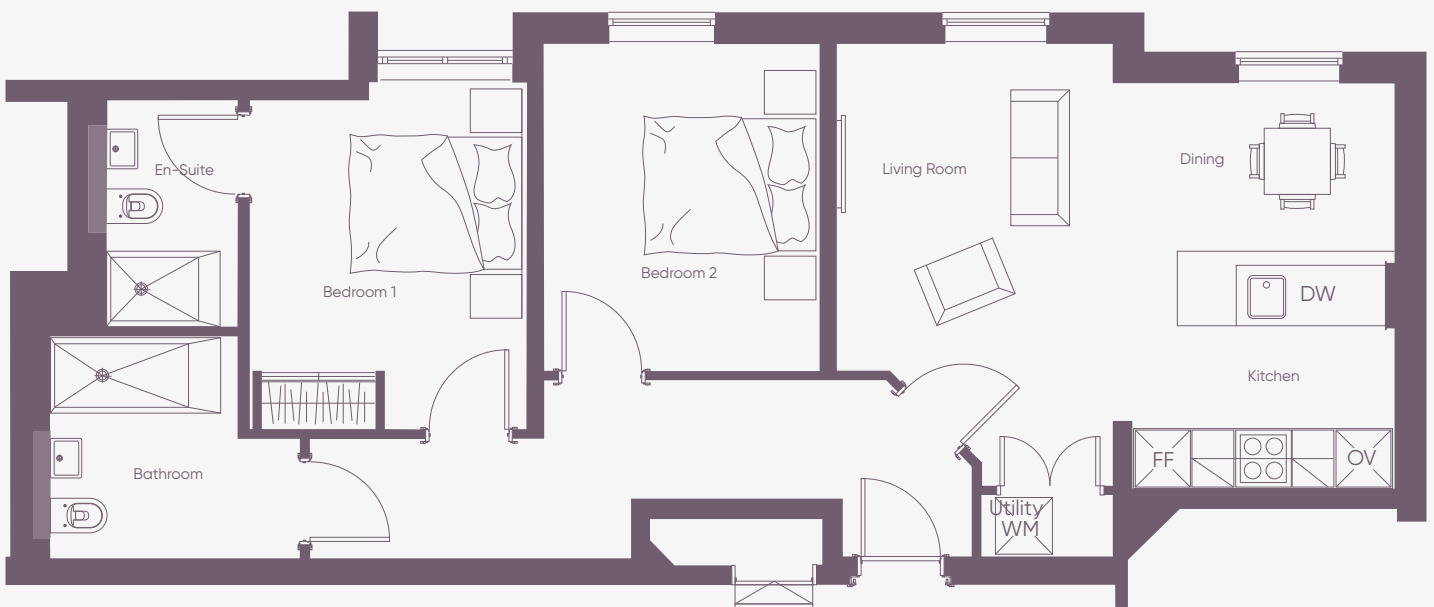


Apartment 104, The Vale

A beautiful two-bedroom apartment on the garden floor

The Brunel
734 sq ft/68m²



The Brunel offers spacious, practical living with an open-plan living area. A contemporary, fully-fitted kitchen comes complete with high-specification and energy-efficient appliances. Two bedrooms - one with en-suite - means you can comfortably host friends and family with ease. Elsewhere, you'll find built-in wardrobes, additional storage space and a dedicated utility room.

Internal measurements

| | | |
|------------------|-----------------|-----------------|
| Kitchen & Lounge | 19' 8" x 15' 3" | 6,040 x 4,660mm |
| Bedroom | 12' 0" x 9' 6" | 3,670 x 2,930mm |
| Bedroom | 11' 4" x 9' 6" | 3,460 x 2,920mm |
| En-suite | 7' 9" x 5' 11" | 2,400 x 1,560mm |
| Bathroom | 9' 4" x 7' 6" | 2,850 x 2,330mm |
| Hall | 17' 2" x 6' 3" | 5,245 x 1,905mm |
| Utility | 5' 1" x 2' 2" | 1,550 x 670mm |

All layouts/dimensions are for illustrative purposes only. Maximum distances shown. Apartments rented unfurnished. Moveable furniture not included. Rooms shown may not be representative of this apartment.



All CGI imagery is illustrative. Apartments rented unfurnished. Moveable furniture not included. Rooms shown may not be representative of this apartment.