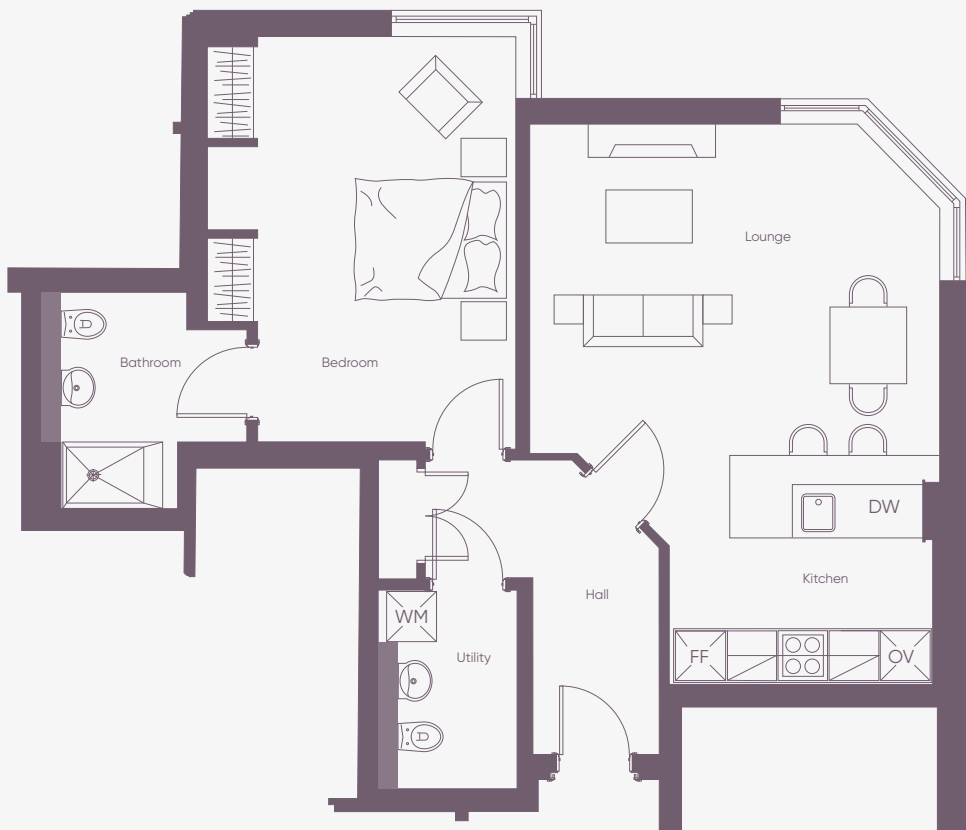


## Apartment 108, The Vale

A beautiful one-bedroom apartment on the street level

The Newton  
690 sq ft/64m<sup>2</sup>



If you're looking for spacious open-plan living, then look no further than The Newton. A fully-fitted kitchen, complete with high-specification and energy-efficient appliances, is complemented by a spacious dining and living area. The master bedroom features an integrated wardrobe with en-suite bathroom.

### Internal measurements

Kitchen & Lounge	15' 9" x 22' 1"	4,850 x 6,730mm
Bedroom	15' 9" x 12' 2"	4,850 x 3,730mm
Hall	11' 6" x 5' 1"	3,525 x 1,550mm
Cupboard	4' 6" x 1' 5"	1,400 x 460mm
WC	7' 8" x 5' 5"	2,380 x 1,670mm

All layouts/dimensions are for illustrative purposes only. Maximum distances shown. Apartments rented unfurnished. Moveable furniture not included. Rooms shown may not be representative of this apartment.



All CGI imagery is illustrative. Apartments rented unfurnished. Moveable furniture not included. Rooms shown may not be representative of this apartment.